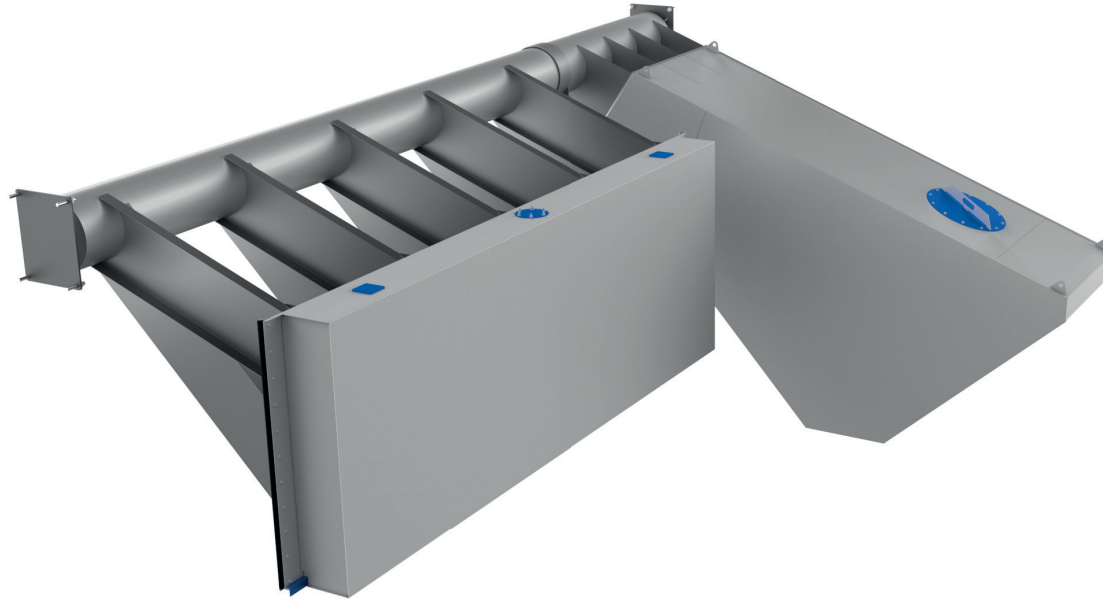


# ASK-Weir



## PRODUCT DESCRIPTION

The ASK-Weir is used to keep the water level precisely constant without external energy and during backwater conditions. This way, it is possible to fore-go flooding levels when dams overflow and reliably activate reservoir volumes. Due to the purely upper water-dependent regulation function, ASK-Weirs are also implemented in backwater conditions and for flood protection. ASK-Weirs also reliably hold back floating matter. The safest solution when it comes to relieving strain.

## YOUR ADVANTAGES

- Precisely constant water level = constant reservoir target for volume activation, even in case of backwater
- No external energy for the drive and regulation is required
- Holding back of floating and suspended matter
- Small, compact structures
- Maximum operational safety

## USE

- Dams and flood retention reservoirs
- Storm water tanks/sewer reservoirs
- Hydropower plants
- Water treatment plants
- Polders
- Receiving waters

